

Conforme à la Directive Européenne 94/20/CEE
In accordance to E.E.C. standard 94/20

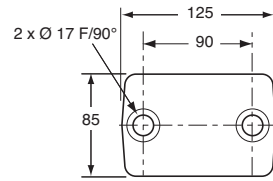
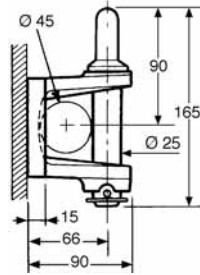
Les chapes doivent être boulonnées et non soudées.
Yokes must be screwed and never welded.

* Visserie fournie
* Delivered with bolt

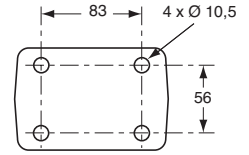
e2*94/20
CEE
7510



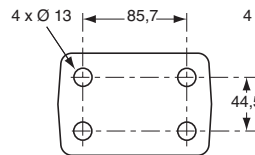
2,240
Chape 93 A.
Yoke 93 A.



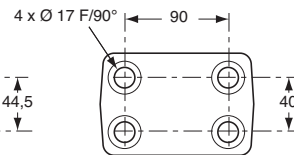
29.05701 * . 93A/1
Percée 2 trous Ø 17.
2 holes Ø 17.



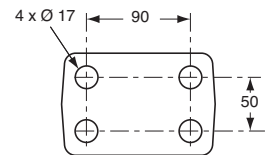
29.05702 . 93A/2
Percée 4 trous Ø 10,5.
4 holes Ø 10,5.



29.05703 . 93A/3
Percée 4 trous Ø 13.
4 holes Ø 13.

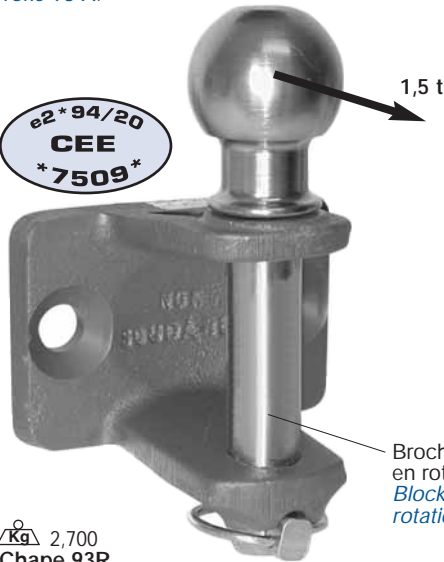


29.05704 * . 93A/4
Percée 4 trous Ø 17.
4 holes Ø 17.



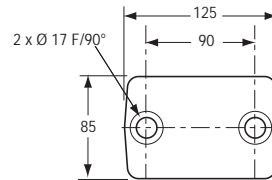
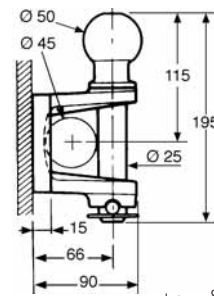
29.05705 . 93A/5
Percée 4 trous Ø 17.
4 holes Ø 17.

e2*94/20
CEE
7509

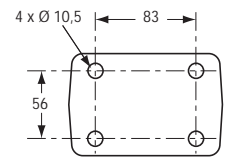


2,700
Chape 93R.
Yoke 93 R.

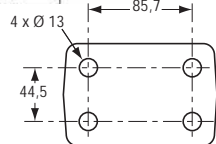
Broche bloquée en rotation.
Blocked pin in rotation.



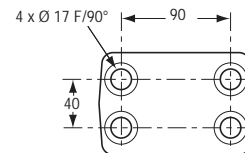
29.05711 * . 93R/1
Percée 2 trous Ø 17.
2 holes Ø 17.



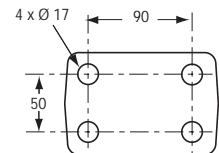
29.05712 . 93R/2
Percée 4 trous Ø 10,5.
4 holes Ø 10,5.





29.05713 . 93R/3
Percée 4 trous Ø 13.
4 holes Ø 13.



29.05714 * . 93R/4
Percée 4 trous Ø 17.
4 holes Ø 17.



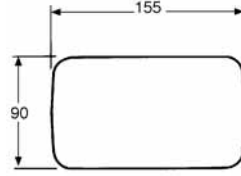
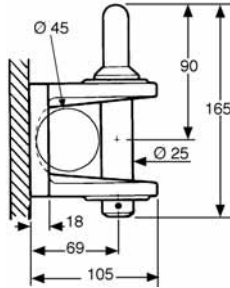
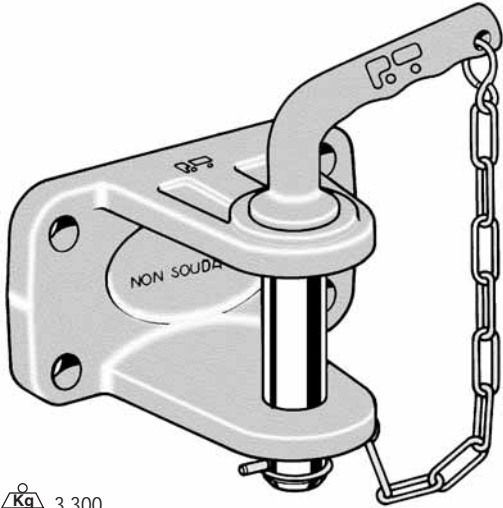
29.05715 . 93R/5
Percée 4 trous Ø 17.
4 holes Ø 17.

Référence Part number	Type Type	Visserie Ø / Classe Bolt Ø / Grade	Utilisation flèche articulée Articulated drawbar utilisation	Utilisation essieux centraux Central axles utilisation		 (t) maxi	 (t) maxi**
				D (kN)	Dc (kN)		
29.05701*	93A/1	M16 / 10.9	20	20	120	8,5	3,5
29.05702	93A/2	M10 / 10.9					
29.05703	93A/3	M12 / 8.8					
29.05704*	93A/4	M16 / 10.9					
29.05705	93A/5	M16 / 8.8					
29.05711*	93R/1	M16 / 10.9	20	20	120	8,5	3,5
29.05712	93R/2	M10 / 10.9					
29.05713	93R/3	M12 / 8.8					
29.05714*	93R/4	M16 / 10.9					
29.05715	93R/5	M16 / 8.8					
29.05711*	93R/1	M16 / 10.9	12	12	120	5	1,5
29.05712	93R/2	M10 / 10.9					
29.05713	93R/3	M12 / 8.8					
29.05714*	93R/4	M16 / 10.9					
29.05715	93R/5	M16 / 8.8					

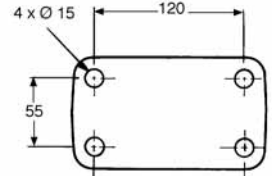
11-2005
** P.T.R. de la remorque donné à titre indicatif, à vérifier en fonction des caractéristiques du convoi, voir page A05-03.
The max. permissible mass of the trailer is given for information. This value must be verified in accordance to the formula page A05-06.



Les chapes doivent être boulonnées et non soudées.
Yokes must be screwed and never welded.

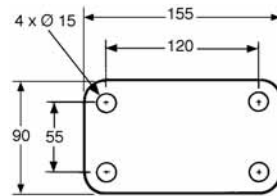
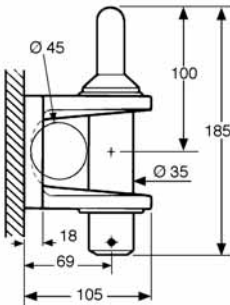
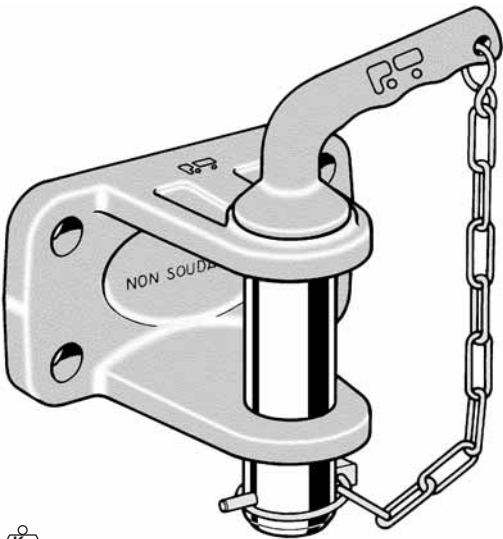


29.05720 *
A percer.
To be drilled.



29.05721
Percée 4 trous Ø 15.
4 holes Ø 15.

3,300
Chape 90 à broche de Ø 25.
Yoke 90 with pin Ø 25.



29.05722
Percée 4 trous Ø 15.
4 holes Ø 15.

5,050
Chape 98 à broche de Ø 35.
Yoke 98 with pin Ø 35.

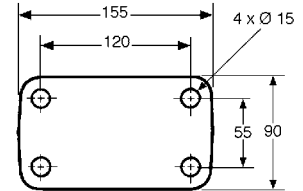
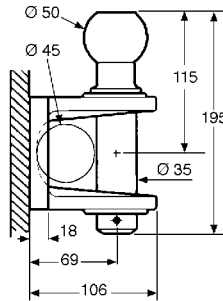
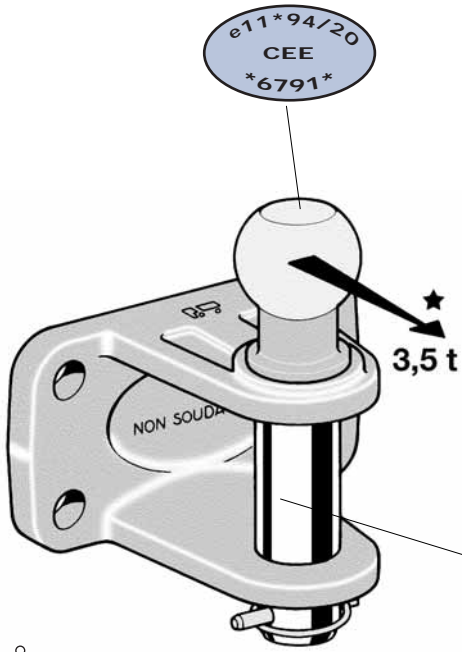
Référence Part number	Utilisation flèche articulée Articulated drawbar utilisation							
		(t) maxi	(t) maxi**	Dc (kN)	S (kg)	V (kN)	(t) maxi	(t) maxi**
29.05721	D (kN)	22	8	50	250	15	22	6,5
29.05722	D (kN)	28,5	15	50	650	18	22	6,5

Pour ces produits, se reporter aux conditions générales page A05-01 à A05-02. For these products, see general specifications page A05-04 to A05-05.

** P.T.R. de la remorque donné à titre indicatif, à vérifier en fonction des caractéristiques du convoi, voir page A05-03.
The max. permissible mass of the trailer is given for information. This value must be checked in accordance to the formula page A05-06.



Les chapes doivent être boulonnées et non soudées.
Yokes must be screwed and never welded.



29.05723
Percée 4 trous Ø 15.
4 holes Ø 15.



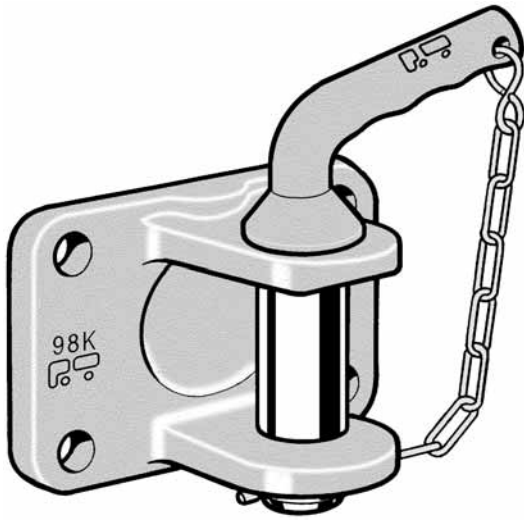
4
Chape 98 à broche de Ø 35.
Yoke 98 with pin Ø 35.

Référence Part number	Utilisation flèche articulée Articulated drawbar utilisation			Utilisation essieux centraux Central axles utilisation			
		(t) maxi	(t) maxi**	Dc (kN)	S (kg)	(t) maxi	(t) maxi**
29.05723 (sur broche / Pin)	31	35,5	3,5	31	375	35,5	3,5
29.05723 (sur boule / Ball) *	21,1	35,5 <-> 9	2,3 <-> 3,5	21,1	250	35,5 <-> 9	2,3 <-> 3,5

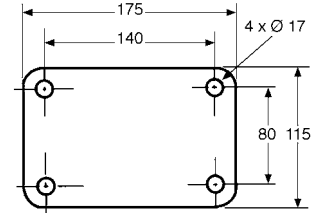
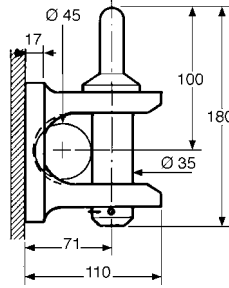
** P.T.R. de la remorque donné à titre indicatif, à vérifier en fonction des caractéristiques du convoi, voir page A05-03.
The max. permissible mass of the trailer is given for information. This value must be verified in accordance to the formula page A05-06.



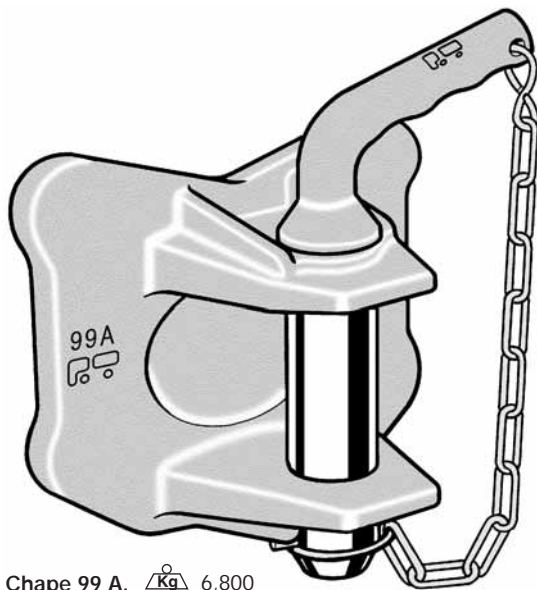
Les chapes doivent être boulonnées et non soudées.
Yokes must be screwed and never welded.



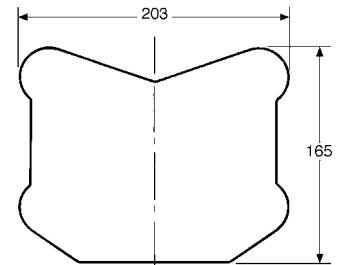
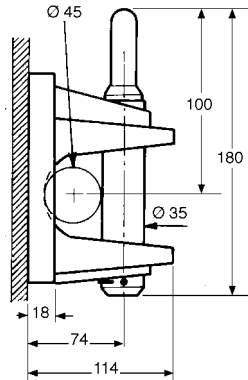
Chape 98 K. \triangleleft Kg 3,700
Yoke 98 K.



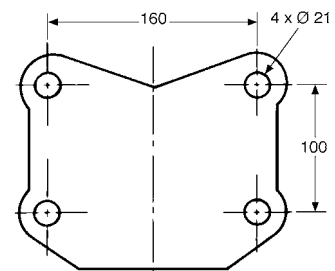
29.05730
Percée 4 trous Ø 17.
4 holes Ø 17.





Chape 99 A. \triangleleft Kg 6,800
Yoke 99 A.



29.05740 *
A percer.
To be drilled.



29.05741
Percée 4 trous Ø 21.
4 holes Ø 21.

Référence Part number	Utilisation flèche articulée Articulated drawbar utilisation			Utilisation essieux centraux Central axles utilisation				
		(t) maxi	(t) maxi**	Dc (kN)	S (kg)	V (kN)	(t) maxi	(t) maxi**
29.05730	D (kN)	30	16	70	900	18	30	6,5
29.05741	110	46	25	90	1000	35	40	13

* Pour ces produits, se reporter aux conditions générales page A05-01 à A05-02. * For these products, see general specifications page A05-04 to A05-05.

** P.T.R. de la remorque donné à titre indicatif, à vérifier en fonction des caractéristiques du convoi, voir page A05-03.

The max. permissible mass of the trailer is given for information. This value must be verified in accordance to the formula page A05-06.